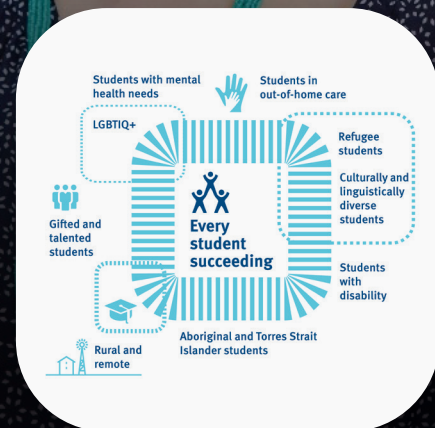


2021 STATE-WIDE INCLUSIVE LEADERSHIP FOR MIDDLE LEADERS AND DEPUTY PRINCIPALS

PROGRAM OVERVIEW

Inclusive Leadership for Middle Leaders and Deputy Principals is a nine month, online program that focuses on strengthening the capacities of Middle Leaders and Deputy Principals. It is designed to stretch aspirants to the next leadership level and further enhance their current leadership role. The program provides a closer exploration of the knowledge, skills and confidence to lead and develop others for effective leadership of inclusive school communities.

The program draws on the latest evidence about effective leadership for inclusive schools. Throughout the program, learning is consolidated through one-to-one coaching and through participation in mutually supportive, reflective and professional collegiate groups.



Virtual Workshop Series & Leadership Project

\$1,500 + GST = \$1650.00

Register via qeli.qld.edu.au/inclusive-leadership-for-middle-leaders-and-deputy-principals

The *Inclusive Leadership for Middle Leaders and Deputy Principals* program builds the capacity of current and aspiring middle leaders and deputy principals to play a pivotal role in both driving school improvement and preparing leaders for the future.

PROGRAM OBJECTIVES

The *Inclusive Leadership for Middle Leaders and Deputy Principals* program will broaden your understanding and enable you to:

- ▶ gain commitment through the process of influence
- ▶ conduct reflective and professional conversations to support teachers to build their capability
- ▶ lead high performance teams to develop collective efficacy
- ▶ become more skilled in building relationships and trust within your team
- ▶ lead learning to ensure consistency of the teaching program and shared understanding of effective teaching
- ▶ strengthen understanding of self and develop your own statement of belief.

PROGRAM FEATURES

- ▶ Nine-month multi-modal program
- ▶ 360-degree GENOS survey and one-hour virtual debrief session
- ▶ Combination of theory and practice
- ▶ Access to professional readings and videos
- ▶ Discussions and activities with your facilitator and program participants in online virtual workshops
- ▶ Development of a School Aligned Inclusive Education Leadership Project
- ▶ One-hour virtual School Aligned Inclusive Education Leadership Project coaching session
- ▶ Presentation of School Aligned Inclusive Education Leadership Project success
- ▶ Collegiate networking
- ▶ Aligned to AITSL Australian Professional Standards



Queensland
Government



www.qeli.qld.edu.au

+61 456 203 538

@ info@qeli.qld.edu.au



PROGRAM STRUCTURE

PHASE 1 INTRODUCTORY MODULE

- ▶ Welcome Virtual Workshop (1hr) – **9 Mar 2021, 9:00am**
- ▶ 360 GENOS Survey - **10 Mar to 7 Apr 2021**
- ▶ Virtual 360 GENOS Report debrief session to develop targeted leadership behaviour growth (1hr) – **Apr 2021**
- ▶ Participant/supervisor discussion - School Aligned Inclusive Education Leadership Project

PHASE 2 VIRTUAL WORKSHOP SERIES AND LEADERSHIP PROJECT

Leadership Module Virtual Workshop Series and Leadership Project

Each module will have an inclusive education context.

- ▶ Module 1 (2hr) - Leading Inclusive Education with Vision and Purpose and planning for School aligned Leadership Project and leadership behaviour growth - **4 May 2021, 9:00am**
- ▶ Module 2 (2hr) - Emotional Intelligence - **19 May 2021, 9:00am**
- ▶ Module 3 (2hr) - Developing a Culture of Feedback and Growth Mindset - **4 Jun 2021, 9:00am**
- ▶ Module 4 (2hr) - Coaching and Mentoring - **16 Jun 2021, 9:00am**
- ▶ Module 5 (2hr) - Leading Change - **20 Jul 2021, 9:00am**
- ▶ Module 6 (2hr) - Being Courageous and Vulnerable - **3 Aug 2021, 9:00am**
- ▶ Module 7 (2hr) - Strategic Stakeholder Engagement - **24 Aug 2021, 9:00am**
- ▶ Module 8 (2hr) - Resilience - **7 Sep 2021, 9:00am**
- ▶ Module 9 (2hr) - Powerful Conversations - **12 Oct 2021, 9:00am**

School Aligned Inclusive Education Leadership Project

- ▶ Leadership Project coaching session (1hr) – **Jun/Jul 2021**
- ▶ Draft project submission
- ▶ Regular coaching support from supervisors
- ▶ Coaching Support for Supervisors Virtual Workshop (1hr) – **20 May 2021, 9:00am**

4x Pulse Checks – 24 May, 21 Jun, 23 Aug & 18 Oct 2021

School aligned Leadership Project

Professional Readings



Regional breakout groups



Regional staff invited to attend



Disability and Inclusion Team connection



Principal connection



Masterclasses



Practitioners Voice

Regional focus



- ▶ Regional breakout groups within webinars
- ▶ Regional staff invited to attend webinars to support participants
- ▶ Focused networks of regional participants

Participants' Principal connection



- ▶ Introduction webinar overview of program and alignment to school strategic plan
- ▶ Focused Disability and Inclusion sessions with D+I Executive team - Assistant Director General and Executive Directors

Disability and Inclusion Team connection



Connections with specialised expertise from the Disability and Inclusion team and other State Schooling branches where relevant.

- ▶ Policy Team
- ▶ Reading Centre
- ▶ Inclusive Education
- ▶ Autism Hub
- ▶ Statewide services

Masterclasses



Optional participation in a comprehensive range of parallel masterclasses delivered online or face-to-face. Participants are welcome to attend and invite their Principals and additional colleagues.

These masterclasses include, but are not limited to:

- ▶ Inclusive leadership: reading and writing for all students - Reading Centre, Disability and Inclusion Branch
- ▶ How to support leadership of reading and/or writing improvement within the curriculum in secondary schools: unpacking key considerations – Reading Centre, Disability and Inclusion Branch
- ▶ Introducing the NEW Queensland School Autism Reflection Tool – Autism Hub, Disability and Inclusion Branch
- ▶ The Autism Hub – what we do, and how we can support your school to improve outcomes for students with Autism – Autism Hub, Disability and Inclusion Branch
- ▶ Leading partnering with parents in an inclusive education system - Disability and Inclusion Branch
- ▶ Targeted resourcing – unpacking the funding allocation – Disability and Inclusion Branch
- ▶ Planning for improvement – using the Every student with disability succeeding data reflection tool and the Identifying next steps placemat to support school leaders to strategically plan to improve student outcomes - Disability and Inclusion Branch
- ▶ Spotlight on Improving the outcomes for student with disability in Queensland state schools. The connection between school review findings and practical steps to support school teams to chart improvement plans - Disability and Inclusion Branch
- ▶ Understanding inclusive education through the evidence trajectories of schools across Queensland. What is common across these journeys and how can these be applied to all schools - Disability and Inclusion Branch
- ▶ Accessibility – supporting all students to access and participate in all aspects of learning.
- ▶ Inclusive language, playing a powerful role in contributing to and in eliminating discrimination - Disability and Inclusion Branch
- ▶ Participant or Region designed masterclasses.

Practitioners Voice



- ▶ Past practitioners voice on leading an inclusive agenda and implementation.
- ▶ Recorded practitioners' voice from your regional participants.

Disability and Inclusion Branch



PROGRAM STRUCTURE

PHASE 3 REFLECTIONS ON LEARNING

- ▶ Reflection on leadership journey and what's next Virtual Workshop (1hr) – **2 Nov 2021, 9:00am**
- ▶ Participants submit their School Aligned Inclusive Education Leadership Project presentation as a recorded video with transcript – **8 to 19 Nov 2021**
- ▶ Participants complete and submit the online Reflections on Learning Survey – **22 Nov to 3 Dec 2021**

PHASE 4 RECOGNITION OF PROGRAM COMPLETION

- ▶ Participants receive their certificate of completion - **6 Dec 2021**

School aligned Leadership Project

Professional Readings

Leadership Development Pipeline Programs



Virtual Workshop Series & Leadership Project

\$1,500 + GST = \$1650.00

Register via qeli.qld.edu.au/inclusive-leadership-for-middle-leaders-and-deputy-principals



Queensland
Government



www.qeli.qld.edu.au

+61 456 203 538

@ info@qeli.qld.edu.au

